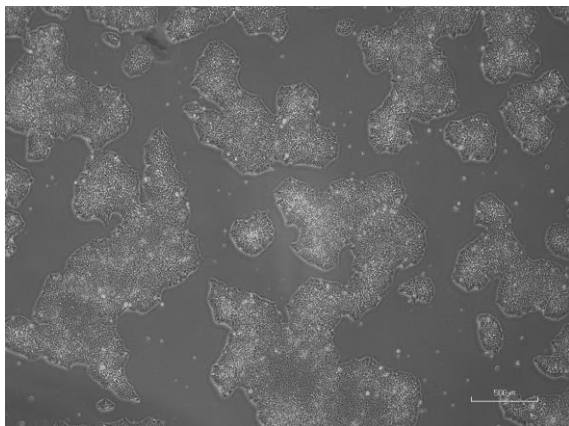
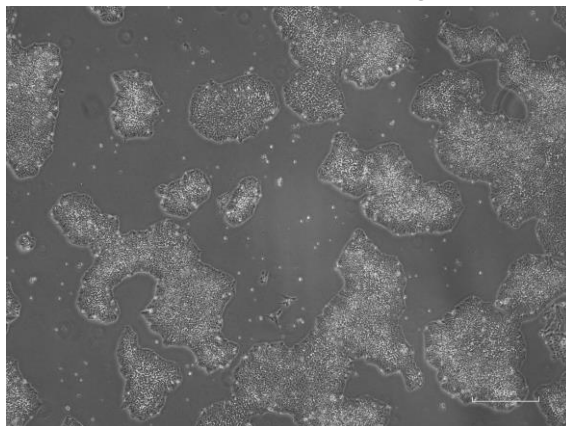


【 CiRA-jk-0112 】 Morphology of iPSC colonies

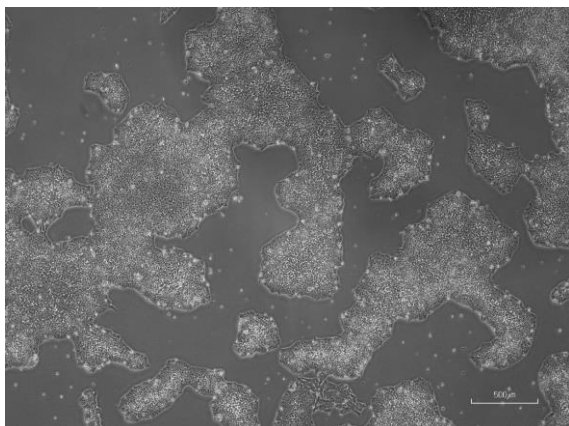
CiRA-jk-0112-A: passage-3



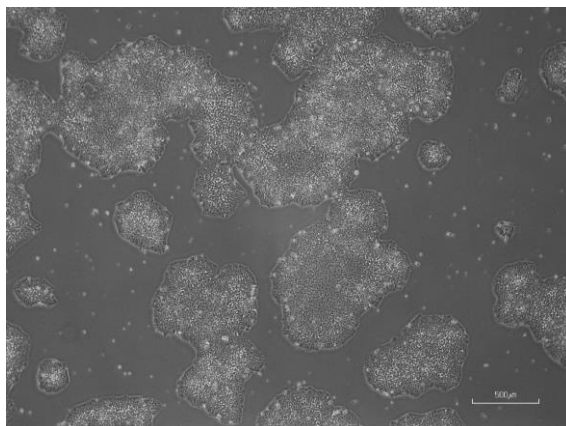
CiRA -jk-0112-B: passage-3



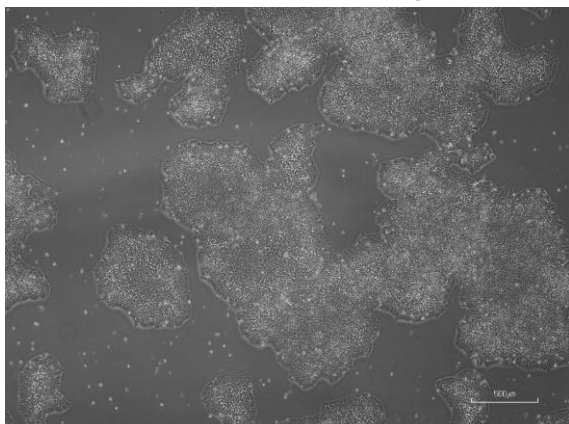
CiRA -jk-0112-C: passage-3



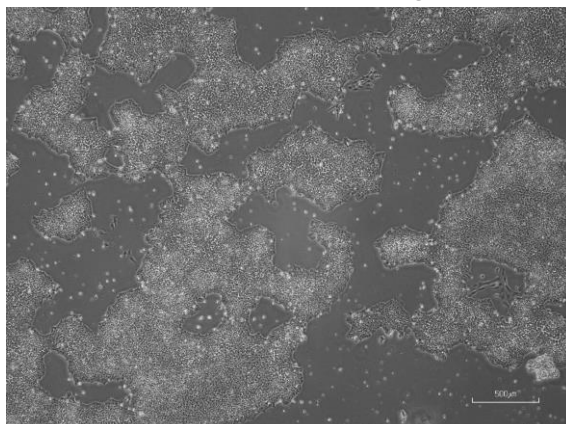
CiRA -jk-0112-D: passage-3



CiRA -jk-0112-E: passage-3



CiRA -jk-0112-F: passage-3



(All images were captured at 4x magnification)